



Pneumatic Fiting

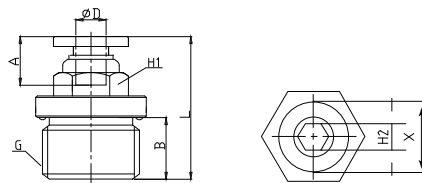
Badron
Pneumatic





Parallel stud, male
اتصال مستقیم

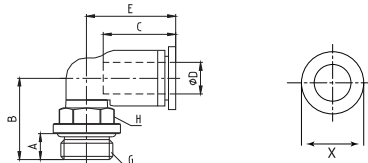
ABC-G



Model	L	A	B	ØD	G	H	H2	X
ABC4-G01	19.3	14.9	5.5	4	G1/8	10	3.0	10
ABC4-G02	17.4	14.9	6.5	4	G1/4	10	3.0	10
ABC6-G01	20.2	16	5.5	6	G1/8	12	4.0	12
ABC6-G02	20.9	16	6.5	6	G1/4	12	4.0	12
ABC6-G03	19.5	16	7.5	6	G3/8	12	4.0	12
ABC6-G04	23	16	9.5	6	G1/2	14	4.0	12
ABC8-G01	27.1	18.2	5.5	8	G1/8	14	5.0	14
ABC8-G02	23	18.2	6.5	8	G1/4	14	6.0	14
ABC8-G03	22.1	18.2	7.5	8	G3/8	14	6.0	14
ABC8-G04	24.1	18.2	9.5	8	G1/2	14	6.0	14
ABC10-G01	28.9	20.3	5.5	10	G1/8	17	5.0	17
ABC10-G02	29.9	20.3	6.5	10	G1/4	17	6.0	17
ABC10-G03	25.9	20.3	7.5	10	G3/8	17	8.0	17
ABC10-G04	25.4	20.3	9.5	10	G1/2	17	8.0	17
ABC12-G01	31.6	22.7	5.5	12	G1/8	21	5.0	20
ABC12-G02	32.6	22.7	6.5	12	G1/4	21	6.0	20
ABC12-G03	34.6	22.7	7.5	12	G3/8	21	8.0	20
ABC12-G04	30.8	22.7	9.5	12	G1/2	21	8.0	20
ABC14-G02	34.7	24.6	6.5	14	G1/4	22	6.0	23.5
ABC14-G03	35.2	24.6	7.5	14	G3/8	22	8.0	23.5
ABC14-G04	35.2	24.6	9.5	14	G1/2	22	10.0	23.5
ABC16-G03	36.1	25	7.5	16	G3/8	24	8.0	23.5
ABC16-G04	38.1	25	9.5	16	G1/2	24	10.0	23.5

Parallel Swiveling Elbow male
اتصال زانویی گردان

AGBL-G



Model	A	B	C	ØD	E	H	G	X
AGBL4-G01	5.5	17.5	14.9	4	18.8	10	G1/8	10
AGBL4-G02	6.5	19	14.9	4	18.8	10	G1/4	10
AGBL4-G03	7.5	20.1	14.9	4	18.8	12	G3/8	10
AGBL6-G01	5.5	18.5	16	6	20	10	G1/8	12
AGBL6-G02	6.5	20	16	6	20	10	G1/4	12
AGBL6-G03	7.5	21.1	16	6	20	12	G3/8	12
AGBL6-G04	9	23.5	16	6	20	12	G1/2	12
AGBL8-G01	5.5	22	18.3	8	22.5	14	G1/8	14
AGBL8-G02	6.5	20.5	18.3	8	22.5	12	G1/4	14
AGBL8-G03	7.5	21.6	18.3	8	22.5	12	G3/8	14
AGBL8-G04	9	24	18.3	8	22.5	14	G1/2	14
AGBL10-G01	5.5	23.3	21	10	26.9	17	G1/8	17
AGBL10-G02	6.5	24.3	21	10	26.9	17	G1/4	17
AGBL10-G03	7.5	22.8	21	10	26.9	20	G3/8	17
AGBL10-G04	9	25.7	21	10	26.9	17	G1/2	17
AGBL12-G01	5.5	24.8	22.6	12	28.5	17	G1/8	20
AGBL12-G02	6.5	25.8	22.6	12	28.5	17	G1/4	20
AGBL12-G03	7.5	24.3	22.6	12	28.5	20	G3/8	20
AGBL12-G04	9	27.2	22.6	12	28.5	17	G1/2	20
AGBL14-G02	6.5	31.2	24.5	14	33.5	20	G1/4	23.5
AGBL14-G03	7.5	32.2	24.5	14	33.5	20	G3/8	23.5
AGBL14-G04	9	30.4	24.5	14	33.5	24	G1/2	23.5
AGBL16-G03	7.5	21.7	25	16	33.5	20	G3/8	23.5
AGBL16-G04	9	29.9	25	16	33.5	24	G1/2	23.5